

pore
enrichment

5 YEAR
WARRANTY

PUREZONE ELITE

4-IN-1 TRUE HEPA AIR PURIFIER



USER MANUAL
MODEL: PEAIRTWR-G

WARNINGS AND PRECAUTIONS



READ THIS ENTIRE INSTRUCTION MANUAL BEFORE OPERATION. FAILURE TO ADHERE TO THE FOLLOWING INSTRUCTIONS CAN CAUSE HARM TO YOU OR THE DEVICE.



Safety precautions should always be used when operating this or any electrical appliance to decrease the risk of electrocution, electric shock, injury or fire. DO NOT attempt to service the product in any way except as described in the “Cleaning & Maintenance” section of this manual.

THIS PRODUCT IS ONLY FOR HOME USE. It should not be used for commercial or industrial purposes. Use only as described in this manual, taking care to adhere to the following warnings and cautions:

- This product can be used by children aged 8 years or older and people with reduced physical, sensory, or mental capabilities if they have been given supervision or instruction concerning the correct use of the product and understand the hazards involved. Children should not be allowed to perform cleaning and user maintenance without supervision.
- This product operates at 120V, 60Hz only.
- This product contains a UV-C emitter. Unintended use of the product or damage to the housing may result in the escape of dangerous UV-C radiation. UV-C radiation may, even in small doses, cause harm to the eyes and skin.
- If the product is visibly damaged, DO NOT operate.
- DO NOT run the power cord under carpeting. DO NOT cover it with throw rugs, runners, or similar coverings. Arrange the cord away from foot traffic where it will not be tripped over.
- DO NOT operate the product in any greasy environment, such as in the kitchen. This product is not intended to filter oil or grease from the air.
- DO NOT use the air purifier in bathrooms or other humid environments. DO NOT use it near fireplaces or in areas where flammable or combustible vapors or products may exist.

WARNINGS AND PRECAUTIONS

- Always unplug the power cord from the electrical outlet when the purifier is not in use, before cleaning, inserting or removing parts, or before moving to another location. To disconnect from the outlet, grip the plug and pull from the power socket. Never pull by the cord.
- Always turn off all controls before unplugging the air purifier from the outlet.
- DO NOT run the air purifier unless it is fully assembled.
- This product has a polarized plug (one blade is wider than the other). To reduce the risk of electric shock, this plug is intended to fit in a polarized outlet only one way. If the plug does not fit fully in the outlet, reverse the plug. If it still does not fit, contact an electrician. DO NOT attempt to defeat this safety feature.
- Attempting to service the air purifier in any way that is not described in this user manual will void the warranty and could cause serious personal injury to the user and/or result in considerable damage to the unit.
- DO NOT place the cord near a heated surface.
- If the power cord is damaged, DO NOT use the product. Contact Pure Enrichment as indicated on Page 7 for a replacement.
- Never use the power cord to pick up, carry, drag, pull, or lift the air purifier. DO NOT pull the cord around sharp corners and edges. This could result in injury or damage to the cord.
- Use care when operating the air purifier by keeping all foreign objects, fingers, body parts, hair, loose clothing and jewelry away from openings.
- Never touch the air purifier or its plug when your hands are wet.
- To reduce the risk of fire or electric shock, DO NOT use this air purifier with any solid-state speed control devices.
- DO NOT attempt to modify this product. Use only the attachments and accessories recommended in this manual.

WARNINGS AND PRECAUTIONS

UV Lamp Notice

UV light is harmful to bare skin and eyes and can cause temporary loss of vision. Never look directly at the UV lamp while it is illuminated; doing so could cause loss of vision! Only view the illumination through the window at the front of the unit. To prevent exposure to the ultraviolet light, unplug the power cord before performing cleaning and maintenance.

UV Lamp Disposal

If the UV lamp breaks, turn off the air purifier. DO NOT operate it with a broken lamp. DO NOT use a vacuum to clean up breakage. Sweep debris into a plastic bag and dispose properly. Contact your local waste management authority for instructions regarding recycling and the proper disposal of old lamp(s). To order a replacement lamp, visit our website at pureenrichment.com.

Mercury Notice

Because this product contains a light bulb and light bulbs contain mercury, please adhere to the following warning:

WARNING: This product contains mercury, a chemical known to the State of California to cause birth defects or other reproductive harm.

DO NOT place your used lamp(s) in the trash. Disposal of any item containing mercury must be in accordance with any hazardous waste disposal or recycling laws and regulations of your state.

This product complies with the maximum allowable concentration of ozone of 0.050 parts per million by volume (ppmv) in a 24-hour period. The Health Canada Guideline 2010 recommends that the maximum exposure limit, based on an averaging time of 8 hours, is 0.020 ppmv or less when tested in a sealed, controlled room approximately 30 m³.

FCC NOTICE

Model: PureZone Elite (PEAIRTWR-G)

This device complies with part 15 of the FCC Rules. Operation is subject to the following two conditions: (1) This device may not cause harmful interference, and (2) this device must accept any interference received, including interference that may cause undesired operation.

Pure Enrichment
2803 S Yale St.
Santa Ana, CA 92704
pureenrichment.com

The product is protected against unauthorized use. DO NOT modify it without the authorization of the manufacturer, or the user's authority to operate could be voided.

Note: This equipment has been tested and found to comply with the limits for a Class B digital device, pursuant to part 15 of the FCC Rules. These limits are designed to provide reasonable protection against harmful interference in a residential installation. This equipment generates, uses and can radiate radio frequency energy and, if not installed and used in accordance with the instructions, may cause harmful interference to radio communications. However, there is no guarantee that interference will not occur in a particular installation. If this equipment does cause harmful interference to radio or television reception, which can be determined by turning the equipment off and on, the user is encouraged to try to correct the interference by one or more of the following measures:

- Reorient or relocate the receiving antenna.
- Increase the separation between the equipment and receiver.
- Connect the equipment into an outlet on a circuit different from that to which the receiver is connected.
- Consult the dealer or an experienced radio/TV technician for help.

INTRODUCTION

Thank you for purchasing PureZone Elite from Pure Enrichment. This premium 4-in-1 True HEPA air purifier with Smart Air Quality Sensor is designed to purify the air and capture 99.97% of dust, pollen, pet dander, smoke, mold spores, and household odors so you can breathe more easily.

PRODUCT FEATURES

PureZone Elite is designed with several features that make it the ideal solution for improving the air quality in your home.

4-stage purification process

Stage 1: Activated Carbon Pre-filter

Stage 2: True HEPA Filter

Stage 3: UV Lamp + Photocatalyst Filter

Stage 4: Ionizer

3 speed fan settings: Allow you to conveniently select your desired cleaning level.

Auto mode: automatically adjusts fan speed depending on air quality.

RED means air quality is poor.

ORANGE means air quality is fair.

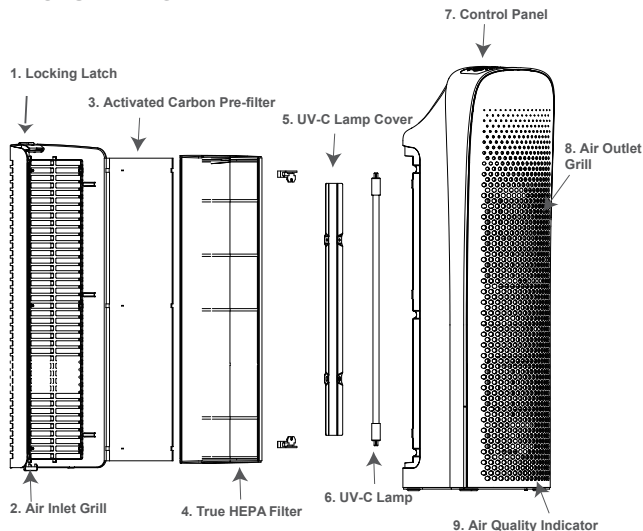
BLUE means air quality is good.

2,4,8 -hour timer: Automatically powers off the product at a time you select.

Sleep mode: Dims the control panel light to minimize visual distraction while you sleep

Change filter indicator: Alerts you when it's time to replace the air filters.

PRODUCT DIAGRAM



REPLACEMENT PARTS

The following parts may need to be replaced on this product periodically and can be purchased at pureenrichment.com:

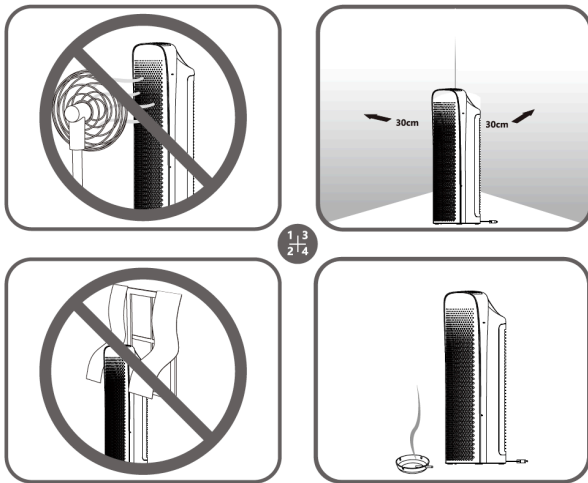
- UV Lamp Bulb, Model No: PEUVTWR
- Activated Carbon Pre-filter + True HEPA Filter, Model No: PETWRFIL

PRODUCT SPECIFICATIONS

Size:	9" x 7" x 25"
Power:	120V AC, 60Hz, 46W
Weight:	9.3 lbs
Coverage Area	>205 sq ft
CADR & Airflow	>132 CFM
Noise Level	≤ 60 dBA
Ion Concentration	> 5million/cm ³
UV Light Lamp Life	254nm / 10,000 hrs

OPERATING PUREZONE ELITE

- Place the air purifier on a level surface near a 120V outlet. Take care to follow all the warnings in the “Warnings and Precautions” section of this manual).
- Position the air purifier at least 12” from the wall and plug it in.
- For your safety:
 - DO NOT place near fans.
 - Keep both sides of the unit at least 12” away from a wall.
 - DO NOT place the unit near curtains.
 - Placing the unit close to the source of air pollution is an effective way to improve indoor air quality.

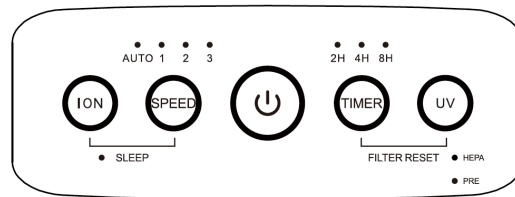


Note:

DO NOT run the air purifier with a broken filter. Replace the filter if the filter has a tear or a hole in it.

If the filter is damaged or needs replacement, please visit pureenrichment.com to order a replacement filter.

CONTROLS & SETTINGS



Power Control – Press the power button to turn on the air purifier.

Timer Control – The air purifier can be programmed to turn off after a preset amount of time. Press the TIMER button to program the timer to run 2 hours, 4 hours, or 8 hours.

Ionizer – Press the ION button to turn the feature on. Press it again to turn it off.

Fan Speed Control – The air purifier has 3 different speeds of cleaning, 1 (LOW), 2 (MED) and 3 (HIGH). Press the SPEED button to cycle through the settings and select the fan speed you desire. The current speed setting will be illuminated on the LED display.

Auto Mode – The air purifier is equipped with an air sensor that monitors the quality of your air. Press the SPEED button until the AUTO light illuminates to activate the air monitoring system. The monitor will test the air quality and automatically adjust the fan speed to remove air contaminants. The front of the display is equipped with LED lights to notify you of the air quality. RED is for poor, ORANGE is for fair and BLUE is for good quality air.

Change Filter Indicator Lights – When the HEPA indicator light turns red, it is time to replace the True HEPA filter. When the PRE indicator light turns red, it is time to replace the Activated Carbon Pre-filter. To reset the filter indicator light, press the TIMER and UV buttons together for 3 seconds. The Change Filter light will flash 3 times and then turn off completely, indicating the unit has been reset.

Sleep Mode – Sleep mode dims the control panel light while you sleep. To turn on sleep mode, simultaneously press the ION and SPEED buttons. In sleep mode, only the SLEEP indicator light will be dimly illuminated. To turn off sleep mode, press any button.

UV Control – Press the UV button to turn on the UV lamp and the photocatalyst filter.

CLEANING & MAINTENANCE

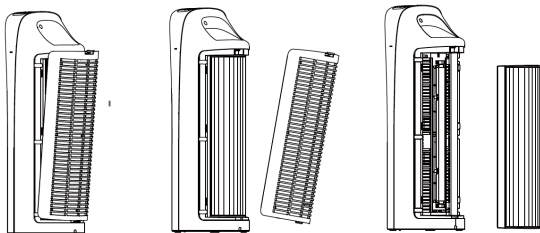
To keep your air purifier functioning properly, we recommend changing the True HEPA filter and activated carbon pre-filter after approximately 6 months of usage. More frequent changing will be necessary if the product is used in an area with a high level of airborne contaminants (such as excessive amounts of smoke, pet dander, etc.). Exposing the product to candle/oil/fireplace and smoke is not recommended and will require more frequent maintenance.

NOTE: ALWAYS MAKE SURE THE AIR PURIFIER IS TURNED OFF AND UNPLUGGED BEFORE THE CHANGING FILTER OR CLEANING.

- DO NOT use water or any household cleaners or detergents to clean the True HEPA filter.
- The inlet grill may be cleaned (after the unit is turned off and unplugged) with a vacuum or a slightly damp cloth.

Changing the True HEPA Filter

1. Release the inlet grill by pressing on the locking latch (see the product diagram on Page 7).
2. Remove the inlet grill from the unit as shown below.
3. Grasp the left and right frames of the True HEPA Filter through the indentations on the sides of the filter enclosure and remove the filter.
4. Insert the new True HEPA Filter. Make sure it is facing the correct direction.
5. Reattach the inlet grill and secure the locking latch into place.
6. Press and hold the Timer and UV buttons at the same time for 3 seconds to reset the Filter Change Indicator.



CLEANING & MAINTENANCE

Changing the Activated Carbon Pre-Filter

1. Release the inlet grill by pressing on the locking latch (see the product diagram on Page 7).
2. Remove the inlet grill from the unit.
3. Grasp the pre-filter from the backside of the inlet grill and remove the pre-filter.
4. Insert new Pre-filter into the inlet grill.
5. Reattach the inlet grill and secure the locking latch into place.
6. Press and hold the Timer and UV buttons at the same time for 3 seconds to reset the Filter Change Indicator.

Cleaning External Surfaces

1. Turn off and unplug the air purifier.
2. Use a washcloth, slightly dampened with water and dishwashing soap, to wipe the outer case surfaces.
3. DO NOT allow water to slip into the internal parts as this could damage the product and result in electrical shock and injury.
4. Allow the air purifier to thoroughly dry before use.

UV Lamp Maintenance

The UV lamp is designed to provide up to 12 months of continuous, effective operation. After this time, the bulb may remain illuminated, but its effectiveness will be reduced. For maximum effectiveness, please replace the UV bulb annually.

If the lamp stops functioning or needs replacement, visit our website at pureenrichment.com to order a replacement lamp.

Caution:

- DO NOT touch the glass part of the lamp. Oil from fingertips will decrease the effectiveness of the lamp.
- Never operate the air purifier without a filter or with a damaged filter. The UV lamp cover must be installed at all times. The UV light from the UV lamp will result in severe damage to eyes and could cause blindness.

CLEANING & MAINTENANCE

UV Lamp Notice Warning

UV light is harmful to bare skin and eyes and can cause temporary loss of vision. Never look directly at the UV lamp while it is illuminated. Doing so could cause loss of vision!

Replacing the UV Lamp

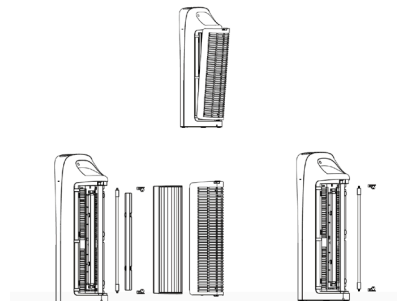
We recommend replacing the UV Lamp Bulb after 12 months of continuous use. After this time, the bulb may remain illuminated, but its effectiveness will be reduced.

Contact your local waste management authority for instructions regarding the proper disposal of old lamp(s).

Before replacing the UV lamp bulb, make sure the air purifier is turned off and unplugged. Let the lamp cool down for 5 minutes before replacing it. Once cool, follow these steps:

1. Release the inlet grill by pressing on the locking latch.
2. Grasp the left and right frames of the True HEPA filter through the indentations on the sides of the filter enclosure and remove the filter.
3. Next, remove the metal UV lamp cover by unscrewing the four (4) screws on the cover using a Philips head screwdriver.
4. Now, open the two (2) white foam safeguards on the UV lamp bulb from the right side. Simply pull the top piece back so that the bulb can be easily removed.
5. Remove the UV lamp bulb by rotating it 180 degrees, which unlocks the prongs, and slide out towards you.
6. Hold both white foam safeguards open from right side for replacement of new lamp. Install the new UV lamp bulb into the lamp base by reverse process in step 5.
7. Replace the metal UV lamp cover with the four (4) screws on the unit.
8. Re-install the True HEPA filter.
9. Reattach the inlet grill and secure the locking latch into place.

CLEANING & MAINTENANCE



TROUBLESHOOTING

Problem	Solution
Unit is not powering on	<p>Check to make sure PureZone Elite is properly plugged in and the electrical outlet is working.</p> <p>Check that the front cover is latched firmly in place.</p> <p>Check that the filter is firmly in place.</p>
Decreased air flow	<p>Check that the filter is clean.</p> <p>Check for any obstructions in the air inlet and outlet.</p>
Excessive noise	<p>Check for any foreign objects in contact with the fan.</p> <p>The filter may be clogged and ready for replacement.</p> <p>The foam sealing gaskets have been installed incorrectly.</p> <p>Uneven positioning.</p>

If your problem is not resolved by the solutions listed above, contact Pure Enrichment for assistance by emailing help@pureenrichment.com.

WARRANTY

PureZone Elite comes with an industry-leading 5 Year Warranty that begins on the date of purchase.

The warranty applies to the air purifier and necessary parts and labor relating thereto. The warranty does not apply to damage resulting from failure to follow the operating instructions, accidents, abuse, alterations, or disassembly by unauthorized individuals.

PRODUCT REGISTRATION

To ensure your full warranty, and to receive product updates and streamlined customer support, remember to register your product at:

pureenrichment.com/productregistration

ARE YOU 100% SATISFIED?

If you have product questions or concerns, don't hesitate to contact us directly at:

Email: help@pureenrichment.com

Phone: (657) 275-3737

(Available Monday-Friday, 8am-5pm PST)

Pure Enrichment has an award-winning warranty, exchange, and customer service program that guarantees hassle-free solutions to any issue you might have within 24 hours!



Santa Ana, CA 92704
pureenrichment.com

REV: 11.29.22