



5 YEAR
WARRANTY

HUME MAX TOP FILL HUMIDIFIER



USER MANUAL
MODEL: PEHUMTOP-K



WARNINGS & PRECAUTIONS

READ THIS ENTIRE INSTRUCTION MANUAL BEFORE OPERATION. FAILURE TO ADHERE TO THE FOLLOWING INSTRUCTIONS CAN CAUSE HARM TO YOU OR THE PRODUCT.

- To reduce the risk of burns, electrical shock, fire, and accident, use this product only in accordance with the following instructions.
- Disassembly, repair, or remodeling by an unauthorized person may result in serious harm and will void the manufacturer's warranty.
- Always place this humidifier on a firm, flat, level, and moisture-resistant surface. This humidifier may not work properly on an uneven surface. Keep the humidifier at least 12 inches away from walls for best results. Do not face the mist outlet directly toward the wall. The manufacturer does not accept any liability for damage in the case of the product being placed incorrectly.
- Do not place this product on cloth, carpet, or an absorbent surface. This may block the air inlet.
- Do not use this product near any other electronic device or near a sink.
- Do not use this product in direct sunlight or near a heat source such as a stove, heater, or radiator.
- Do not cover the air inlet or the mist outlet with a cloth or hand at any time during use.
- Turn off and unplug the product before moving or filling the tank or moving the unit.
- Do not add hot or boiling water. Use only cold water (tap, distilled, mineral, or other drinking water).
- Do not submerge the unit in water or pour water into the mist outlet.
- Do not drink the water used in the tank.
- Do not use if the plug is damaged or loose.

WARNINGS & PRECAUTIONS (CONTINUED)

- Once the humidifier has been plugged in for use, do not tilt, move, or empty the unit.
- Do not remove or handle the plug with wet hands.
- Do not excessively bend, twist, pull, or damage the power cord.
- Unplug the product when it is not in use for an extended period of time and/or when no one is home.
- When unplugging from the outlet, hold the product securely.
- Do not place cord over objects.
- Do not get water in or on the power cord or where the cord connects to the product.
- Do not touch the water tank during operation.
- Do not put anything on or in the tank.
- If the water tank becomes cracked or damaged, do not use the humidifier.
- Do not leave water in the tank when not in use for an extended period of time.
- Use only the cleaner and additives recommended by the manufacturer to clean the water tank.
- Keep this product out of the reach of children and pets.
- Please email Customer Service at help@pureenrichment.com if the humidifier needs repair. Do not try to repair it yourself.

PRODUCT SPECIFICATIONS

Size	7.8" x 7.8" x 11.4"
Power	100-240V, 50/60Hz, 25W
Max. Room Coverage	Up to 300 sq. ft.
Max. Run Time*	30 hours \pm 20% (Low); 18 hours \pm 20% (Medium); 12 hours \pm 20% (High)
Tank Capacity	3.7 liters (.97 gallons)
Moisture Output	300ml/hour \pm 20% (High); 200ml/hour \pm 20% (Medium); 120ml/hour \pm 20% (Low)
Timer	2/4/6 hours
LED Lights	Blue LED light

**Run time may vary depending on water quality and room temperature.*

FCC Notice

Model: Hume Max Top Fill Humidifier (PEHUMTOP-K)

This device complies with part 18 of the FCC Rules.

Pure Enrichment
2803 S Yale St.
Santa Ana, CA 92704
pureenrichment.com

This equipment generates, uses and can radiate radio frequency energy and, if not installed and used in accordance with the instructions, may cause harmful interference to radio communications. The equipment should be maintained as discussed in this manual. Changes or modifications not expressly approved by Pure Enrichment will void the user's authority to operate the equipment. If this equipment does cause harmful interference to radio or television reception, which can be determined by turning the equipment off and on, the user is encouraged to try to correct the interference by one or more of the following measures:

- Reorient or relocate the receiving antenna.
- Increase the separation between the equipment and receiver.
- Connect the equipment into an outlet on a circuit different from that to which the receiver is connected.
- Consult the dealer or an experienced radio/TV technician for help.

INTRODUCTION

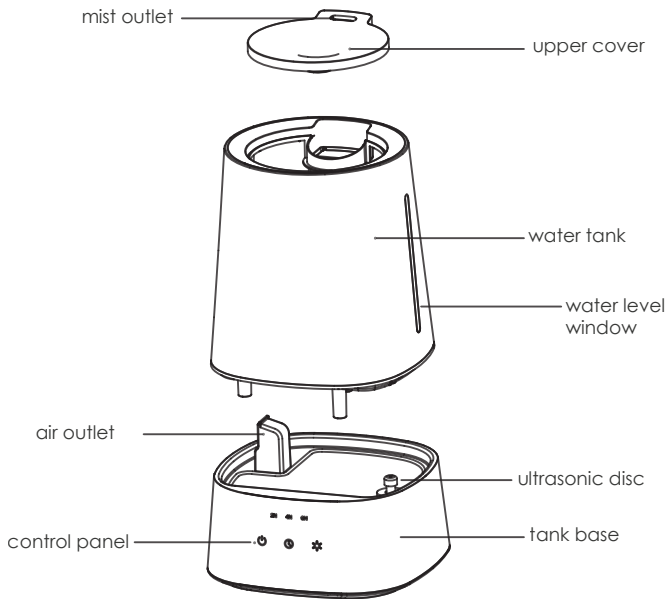
Thank you for purchasing Hume Max from Pure Enrichment. Our powerful ultrasonic humidifier is the perfect solution for moisturizing dry air in your home or office.

PRODUCT FEATURES

We designed Hume Max with several features that make it one of the easiest to use and most effective ultrasonic humidifiers in its price class. These include:

- 3.7-Liter Water Tank
- 3 Speed Settings
- Auto Shut-Off Timer (2hr, 4hr, 6hr)
- Optional Blue LED Light
- Whisper-Quiet Operation
- Aromatherapy Option

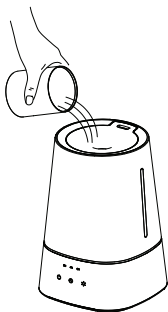
PRODUCT DIAGRAM



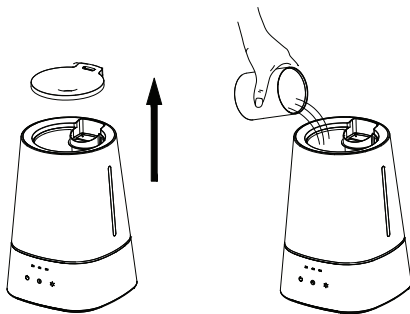
SETTING UP THE HUMIDIFIER

Add water to the humidifier by either:

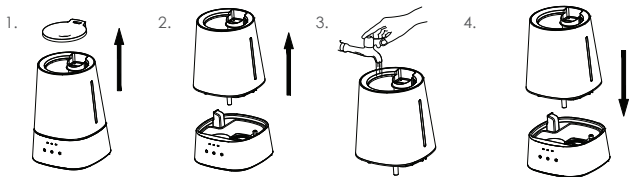
- a. Adding water to the central opening of the upper cover,



- b. Removing the upper cover and adding water directly to the tank, or

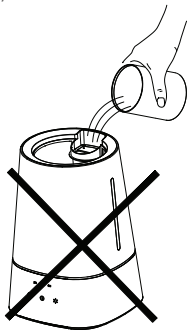


- c. Removing the upper cover and taking the water tank off of the base and then filling the water tank with water before returning it to the base.



NOTE:

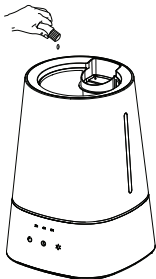
- Do NOT fill the water tank past the top of the water level window located on the side of the humidifier.
- Do not add water directly into the mist outlet.



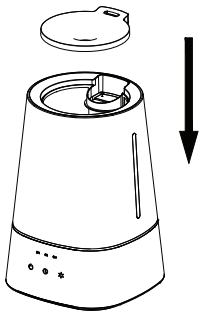
HOW TO USE THE HUMIDIFIER

POWER

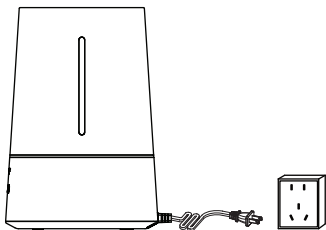
1. If aromatherapy is desired, add several drops of essential oil (not included) directly into the water tank. **NOTE:** Essential oil should not be added if you are using the humidifier with an optional decalcification cartridge. The oil will ruin the filter.



2. Ensure the upper cover is on the water tank.



3. Plug in the humidifier.



4. Touch  to control the humidifier

1st touch: Turns on the humidifier, low mist level

2nd touch: Medium mist level

3rd touch: High mist level

4th touch: Turns off the humidifier

5. Touch  to control the timer

1st touch: 2-hour timer

2nd touch: 4-hour timer

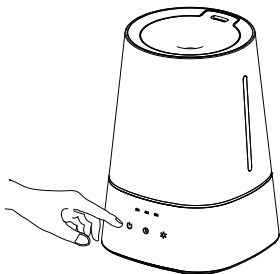
3rd touch: 6-hour timer

4th touch: Turns off timer

6. Touch  to control the night light

1st touch: Turns on the light

2nd touch: Turns off the light



CLEANING & MAINTENANCE

Turn the unit off and disconnect the power plug before cleaning.

NOTE: Be sure you are near a sink or other water-resistant area before cleaning.

1. Cleaning the tank base

- a. Pour excess water out of the unit.
- b. Wash out the unit with water and a soft cloth as needed.
- c. Do not submerge the base of the unit into the water, or allow water to enter inside the air outlet of the unit.

2. Cleaning the water tank

- a. Empty the tank.
- b. Clean with water and a bottle cleaning brush (not included).

3. Cleaning the outer surface of the unit

- a. Wipe with a soft cloth as needed.

4. Descaling

- a. Depending on the usage and water type, cleaning to remove scale may be required weekly or every other week to optimize the product's performance. We suggest using distilled water if the water in your area is hard. Do not clean the unit or water tank with harsh detergents or cleaning chemicals, vinegar may be used instead.

5. Using a Decalcification Cartridge

- a. A decalcification cartridge or humidifier cleaner capsule may be used to keep the tank free of hard mineral deposits. We recommend Pure Enrichment's Humidifier Decalcification Cartridge Filter (Model No.: PECLDDCAL). To purchase, visit pureenrichment.com.

STORAGE

- Turn off and unplug the humidifier before storing it.
- Carefully clean the humidifier. Make sure all parts are clean and dry prior to storing the product.
- Do not leave water in the tank. Water left in the humidifier may result in mineral deposits and promote the growth of mold or other microorganisms.
- Store the humidifier in a cool and dry location. Keep away from direct sunlight.

TROUBLESHOOTING

Problem	Solution
Humidifier has power and is not working	Water tank is empty - Refill the water tank.
	Water tank is positioned incorrectly - Replace the water tank until a beep is heard, and the water goes into the tank base.
No mist or a small amount of mist	Water tank is overfilled - Empty the water tank and refill below the top of the water level window on the side of the humidifier.
	Water tank is empty - Refill the water tank.
	Ultrasonic disc is dirty - Clean the ultrasonic disc with a soft cloth.
	Air inlet is blocked - Place the unit on a flat, hard surface to allow air to flow freely.
Steam has a bad aroma	Dirty water/humidifier - Clean the humidifier completely and refill with clean water.
Blue light is flickering	Water tank is empty - Refill the water tank.

If your problem is not resolved by the solutions listed above, contact Pure Enrichment for assistance by emailing help@pureenrichment.com.

WARRANTY

WARRANTY

Hume Max comes with an industry-leading 5 Year Warranty that begins on the date of purchase.

The warranty applies to the humidifier and the necessary parts and labor relating thereto. The warranty does not apply to damage resulting from failure to follow the operating instructions, accidents, abuse, alterations or disassembly by unauthorized individuals.

PRODUCT REGISTRATION

To ensure your full warranty, and to receive product updates and streamlined customer support, remember to register your product at:

pureenrichment.com/productregistration

ARE YOU 100% SATISFIED?

If you have product questions or concerns, don't hesitate to contact us directly at:

Email: help@pureenrichment.com

Phone: (657)275-3737

(Available Monday-Friday, 8am-5pm PST)

Pure Enrichment has an award-winning warranty, exchange, and customer service program that guarantees hassle-free solutions to any issue you might have within 24 hours!



Santa Ana, CA 92704
pureenrichment.com