

pore
enrichment

5 YEAR
WARRANTY

PUREZONE TURBO SMART AIR PURIFIER



USER MANUAL
MODEL: PEAIRCYL

TABLE OF CONTENTS

WARNINGS AND PRECAUTIONS	3-5
FCC NOTICE	6-7
PRODUCT SPECIFICATIONS	7
INTRODUCTION & PRODUCT FEATURES.....	8
PRODUCT DIAGRAM.....	9
PRE-OPERATING INSTRUCTIONS.....	10
OPERATING INSTRUCTIONS.....	11-13
PUREENRICHMENT APP SETUP.....	14
ALEXA/GOOGLE ASSISTANT VOICE COMMANDS.....	15
FILTER REPLACEMENT.....	15-16
UV-C BULB REPLACEMENT.....	16
CLEANING	17
TROUBLESHOOTING	17-19
WARRANTY & PRODUCT REGISTRATION.....	19

WARNINGS AND PRECAUTIONS



READ THIS ENTIRE INSTRUCTION MANUAL BEFORE OPERATION. FAILURE TO ADHERE TO THE FOLLOWING INSTRUCTIONS CAN CAUSE HARM TO YOU OR THE DEVICE.



Safety precautions should always be used when operating this or any electrical appliance to decrease the risk of electrocution, electric shock, injury or fire. DO NOT attempt to service the product in any way except as described in the “Cleaning & Maintenance” section of this manual.

THIS PRODUCT IS ONLY FOR HOME USE. It should not be used for commercial or industrial purposes. Use only as described in this manual, taking care to adhere to the following warnings and cautions:

- This product can be used by children aged 8 years or older and people with reduced physical, sensory, or mental capabilities if they have been given supervision or instruction concerning the correct use of the product and understand the hazards involved. Children should not be allowed to perform cleaning and user maintenance without supervision.
- Before use remove the plastic bag from the filter.
- To prevent electrical shock, do not spray the device, plug, or cord with liquids. Never submerge any part of the device in water.
- DO NOT drop or insert any object into any openings.
- This product contains a UV-C emitter. Unintended use of the product or damage to the housing may result in the escape of dangerous UV-C radiation. UV-C radiation may, even in small doses, cause harm to the eyes and skin.
- If the product is visibly damaged, DO NOT operate.
- DO NOT run the power cord under carpeting. DO NOT cover it with throw rugs, runners, or similar coverings. Arrange the cord away from foot traffic where it will not be tripped over.
- Always turn off all controls before unplugging the air purifier from the outlet.

WARNINGS AND PRECAUTIONS

- DO NOT operate the product in any greasy environment, such as in the kitchen. This product is not intended to filter oil or grease from the air.
- DO NOT use the air purifier in bathrooms or other humid environments. DO NOT use it near fireplaces or in areas where flammable or combustible vapors or products may exist.
- Always unplug the power cord from the electrical outlet when the purifier is not in use, before cleaning, inserting or removing parts, or before moving to another location. To disconnect from the outlet, grip the plug and pull from the power socket. Never pull by the cord.
- DO NOT run the air purifier unless it is fully assembled.
- This product has a polarized plug (one blade is wider than the other). To reduce the risk of electric shock, this plug is intended to fit in a polarized outlet only one way. If the plug does not fit fully in the outlet, reverse the plug. If it still does not fit, contact an electrician. DO NOT attempt to defeat this safety feature.
- Attempting to service the air purifier in any way that is not described in this user manual will void the warranty and could cause serious personal injury to the user and/or result in considerable damage to the unit.
- If the power cord is damaged, DO NOT use the product. Contact Pure Enrichment as indicated on Page 7 for a replacement.
- Never use the power cord to pick up, carry, drag, pull, or lift the air purifier. DO NOT pull the cord around sharp corners and edges. This could result in injury or damage to the cord.
- Use care when operating the air purifier by keeping all foreign objects, fingers, body parts, hair, loose clothing and jewelry away from openings.
- Never touch the air purifier or its plug when your hands are wet.
- To reduce the risk of fire or electric shock, DO NOT use this air purifier with any solid-state speed control devices.
- DO NOT attempt to modify this product. Use only the attachments and accessories recommended in this manual.

WARNINGS AND PRECAUTIONS

UV Lamp Notice

UV light is harmful to bare skin and eyes and can cause temporary loss of vision. Never look directly at the UV lamp while it is illuminated; doing so could cause loss of vision! Only view the illumination through the window at the front of the unit. To prevent exposure to the ultraviolet light, unplug the power cord before performing cleaning and maintenance.

UV Lamp Disposal

If the UV lamp breaks, turn off the air purifier. DO NOT operate it with a broken lamp. DO NOT use a vacuum to clean up breakage. Sweep debris into a plastic bag and dispose properly. Contact your local waste management authority for instructions regarding recycling and the proper disposal of old lamp(s). To order a replacement lamp, visit our website at pureenrichment.com.

Mercury Notice

The UVC light contains a small amount of mercury. For proper disposal see <https://www.epa.gov/cfl/cleaning-broken-cfl>

FCC NOTICE

Model: PureZone Turbo (PEAIRCYL)

This device complies with part 15 of the FCC Rules. Operation is subject to the following two conditions: (1) This device may not cause harmful interference, and (2) this device must accept any interference received, including interference that may cause undesired operation.

Pure Enrichment
2803 S Yale St.
Santa Ana, CA 92704
pureenrichment.com

The product is protected against unauthorized use. DO NOT modify it without the authorization of the manufacturer, or the user's authority to operate could be voided.

Note: This equipment has been tested and found to comply with the limits for a Class B digital device, pursuant to part 15 of the FCC Rules. These limits are designed to provide reasonable protection against harmful interference in a residential installation. This equipment generates, uses and can radiate radio frequency energy and, if not installed and used in accordance with the instructions, may cause harmful interference to radio communications. However, there is no guarantee that interference will not occur in a particular installation. If this equipment does cause harmful interference to radio or television reception, which can be determined by turning the equipment off and on, the user is encouraged to try to correct the interference by one or more of the following measures:

- Reorient or relocate the receiving antenna.
- Increase the separation between the equipment and receiver.
- Connect the equipment into an outlet on a circuit different from that to which the receiver is connected.
- Consult the dealer or an experienced radio/TV technician for help.

FCC RADIATION EXPOSURE STATEMENT

This equipment complies with FCC radiation exposure limits set forth for an uncontrolled environment. End users must follow the specific operating instructions for satisfying RF exposure compliance. To maintain compliance with FCC RF exposure compliance requirements, please follow operation instructions as documented in this manual. This transmitter must not be co-located or operating in conjunction with any other antenna or transmitter. This equipment should be installed and operated with a minimum distance of 20cm between the radiator and your body. The availability of some specific channels and/or operational frequency bands are country dependent and are firmware programmed at the factory to match the intended destination. The firmware setting is not accessible by the end user.

PRODUCT SPECIFICATIONS

Size	11.1" x 11.1" x 21.7"
Power	120V AC, 60Hz, 55W
Coverage Area	434 sq ft
CADR & Airflow	280 CFM
Noise Level	27-54 dB
UV Light	254nm

REPLACEMENT PARTS

The following parts may need to be replaced on this product periodically and can be purchased at pureenrichment.com:

- UV Lamp Bulb, Model No: PEUVCYL
- True HEPA Air Filter, Model No: PECYLFIL

INTRODUCTION

Thank you for purchasing PureZone Turbo from Pure Enrichment. This premium 5-in-1 Smart Air Purifier is designed to purify the air and capture 99% of dust, pollen, pet dander, smoke, mold spores, and household odors so you can breathe more easily.

PRODUCT FEATURES

PureZone Turbo is designed with several features that make it the ideal solution for improving the air quality in your home.

5-stage purification process

- Stage 1: Pre-Filter: Captures initial dust and allergen particles
- Stage 2: Antibacterial* Filter: Inhibits the growth of bacteria
- Stage 3: True HEPA Filter: Captures dust, pollen, pet dander, mold spores, and other allergens from the air
- Stage 4: Activated Carbon Filter: Absorbs odors and harmful gases
- Stage 5: Antimicrobial† UV-C Light: Enhances the elimination of airborne germs

4 speed fan settings: Let you select your desired cleaning level.

Auto mode: Automatically adjusts speed depending on air quality.

Level 1 Low (BLUE): means air quality is good.

Level 2 Medium (YELLOW): means air quality is moderate.

Level 3 High (ORANGE): means air is lightly polluted.

Level 4 Turbo (RED): means air is heavily polluted.

Auto timer: Select between 1 and 12 hours in one-hour increments to automatically power off the unit to conserve energy and extend filter life.

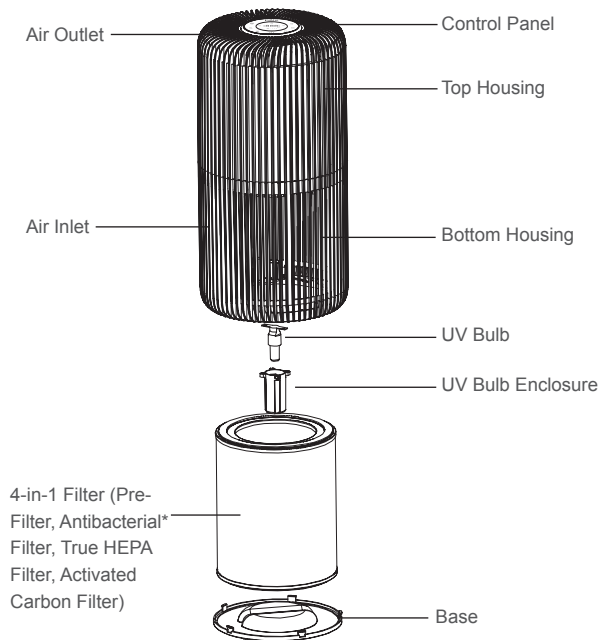
Sleep mode: Turns off all control panel lights (except the Sleep Mode Indicator) to minimize visual distraction while you sleep.

Change filter indicator: Alerts you when it's time to replace filter.

**prolongs filter life*

†Staphylococcus albus, Escherichia coli, Aspergillus niger, H1N1 independent testing

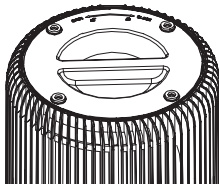
PRODUCT DIAGRAM



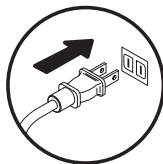
**prolongs filter life*

PRE-OPERATING INSTRUCTIONS

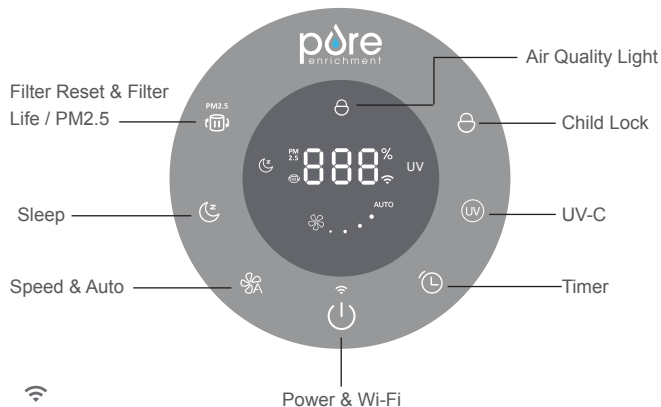
1. Carefully remove the device from the box and plastic bag.
2. Flip the device over, twist the base counter-clockwise and remove it.



3. Before using, remove the filter from the plastic packaging and place the filter back into the device.
4. Reattach the base and twist it clockwise to lock.
5. Select a firm, level, and flat location to position the device.
NOTE: For proper air flow, place the device at least 12" away from any wall or furniture. Make sure none of the vents are blocked.
6. Plug the device into a 120V AC electrical outlet.



OPERATING INSTRUCTIONS



Power & Wi-Fi button:

- Press this button to turn the unit on or off.
- Press and hold this button for 3-5 seconds for Wi-Fi connection.
- The unit is designed with two Wi-Fi connection modes: fast flickering for Auto Connection and slow flickering for Manual Connection. The Wi-Fi indicator will turn white solid when connected.



Speed & Auto button:

The air purifier has 4 speed levels. Press the button to cycle through the settings and select the fan speed you desire. The current speed setting will be illuminated on the LED display.

- Default speed when first turned on: Level 1 (Low), Auto off
- 1st press = Level 2 (Medium)
- 2nd press = Level 3 (High)
- 3rd press = Level 4 (Turbo)
- 4th press = Auto
- 5th press = returns to Level 1 (Low) and starts the cycle over.

OPERATING INSTRUCTIONS (CONT.)

B.) The air purifier is equipped with an air sensor that monitors the quality of your air. The monitor will test the air quality and automatically adjust the fan speed to remove air contaminants. The display is equipped with LED lights to notify you of the air quality.

Light	Blue	Yellow	Orange	Red
Air Quality	Good: <50ug/m3	Moderate: 50-100ug/m3	Lightly polluted: 100-150ug/m3	Heavily polluted: ≥150ug/m3
Speed (Under Auto Mode)	Level 1 (Low)	Level 2 (Medium)	Level 3 (High)	Level 4 Turbo



Timer button:

Press the Timer button to select the desired operating time and the display will show the time set. Remaining period of timer will be displayed by decrements of 1 hour.

1st press = 1H

2nd press = 2H

.....

12th press = 12H

13th press = Display switches back to the settings before the timer action.

14th press = Returns to 1H and starts the cycle over.

The unit will stop when the selected operating time has elapsed.

NOTE: Press and hold for 3 seconds to deactivate timer.



Sleep button:

Press the Sleep button to activate Sleep mode. The sleep icon will flash for 5 seconds before the unit enters into sleep mode. Sleep indicator lights up, while all other indicators and the light will be turned off automatically. Unit will stay at current settings chosen. To turn off sleep mode, press any button.

NOTE: If the timer period ends under sleep mode, the device will be turned off. Press the power button to restart the unit.

OPERATING INSTRUCTIONS (CONT.)



UV-C button:

Press the UV-C button to turn on/off the UV-C light.



Filter Reset & Filter Life / PM2.5 Display button:

A.) When it is time to replace the filter, the filter reset indicator will light up solid red. Replace the filter, then press and hold the filter reset button for 3 seconds to reset it. The red light will turn off after reset.

B.) If you want to replace the filter before the filter life ends, press and hold the power button for 3 seconds to reset the filter in advance. The filter reset indicator will flash for 20 seconds, during which you can press and hold the button again to reset the filter. If you do not press and hold the button again, the indicator will go off after 20 seconds.

C.) Unit defaults to display of filter life when first used and then memorizes the last display. Press the button to switch between filter life display and PM2.5 display.

1st press = continuous display of PM2.5 value

2nd press = continuous display of filter life



Child Lock button:

Press and hold for 3 seconds to activate/deactivate the Child lock. If any button is pressed when child lock is activated, the icon will flash 3 times as indicator for locked status.

NOTE: When the device is not in use, turn it off and unplug it. The device has a memory function that will save the previous settings of UV-C, Speed, and Auto before the device is turned off or unplugged.

PURE ENRICHMENT APP SETUP

1. Download the Pure Enrichment app by searching for Pure Enrichment in the App Store® (iOS devices), on Google Play (Android™ devices), or by scanning the following QR code.



2. Turn on your smartphone's Wi-Fi and Bluetooth to connect.
3. Open the Pure Enrichment app. Log In or Sign Up.
4. Follow the in-app instructions to set up your smart air purifier
5. For additional instructions on app setup, visit: pureenrichment.com/products/purezone-turbo-smart-air-purifier or scan the QR code below.



Connect with Amazon Alexa or Google Assistant

You can use the Pure Enrichment app to connect your smart air purifier to Amazon Alexa or Google Assistant. Please follow the in-app instructions to set up your voice assistant.

NOTE: You must create your own Pure Enrichment account to access voice assistants.

ATTRIBUTIONS

- Google, Android, and Google Play are trademarks of Google LLC.
- App Store® is a trademark of Apple Inc.
- Wi-Fi is a registered trademark of Wi-Fi Alliance®.
- iOS is a registered trademark of Cisco Systems, Inc. and/or its affiliates in the United States and certain other countries.
- The Bluetooth® word mark and logos are registered trademarks owned by Bluetooth SIG, Inc. and any use of such marks by Pure Enrichment is under license. Other trademarks and trade names are those of their respective owners.

ALEXA/GOOGLE ASSISTANT DEVICE VOICE COMMANDS

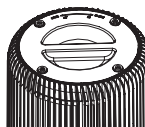
Topic	Command
Power On/Off	Alexa, turn on/off PureZone Turbo.
	Hey Google, turn on/off PureZone Turbo.
Mode Settings	Alexa, set PureZone Turbo to sleep/auto/manual mode.
	Alexa, what is the mode on PureZone Turbo?
	Hey Google, set mode on PureZone Turbo to sleep/auto/manual.
Speed Settings	Alexa, what is the fan speed on PureZone Turbo?
	Alexa, set PureZone Turbo fan speed to one/two/three/four.
	Hey Google, what is the PureZone Turbo speed?
	Hey Google, set PureZone Turbo to level 1/level 2/level 3/level 4.
Child lock ON/OFF	Alexa, turn on/off child lock on PureZone Turbo.
	Alexa, is child lock on for PureZone Turbo?
	Hey Google, turn on/off child lock on PureZone Turbo.
	Hey Google, is PureZone Turbo child lock on?
Ultraviolet ON/OFF	Alexa, turn on/off ultraviolet on PureZone Turbo.
	Hey Google, turn UV on/off on PureZone Turbo.

FILTER REPLACEMENT

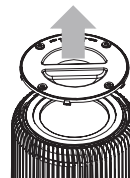
When it is time to replace the filter, the filter reset indicator will light up solid red.

NOTE: The 4-in-1 filter will last approximately 6 months, depending on usage and environment conditions. It's important to maintain and change the filter to continue to optimize the performance of the air purifier. To purchase the replacement filter (Model: PECYLFIL), visit pureenrichment.com.

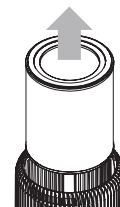
1. Turn off and unplug the device.
2. Flip the unit to access the base.



3. To open, place both thumbs on opposite sides of handle and twist counterclockwise

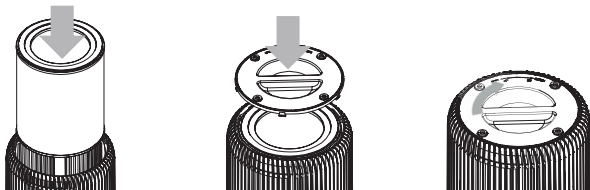


4. Lift base off of the unit.



5. Remove and dispose of the used filter.

FILTER REPLACEMENT (CONT.)



6. Insert new filter. Secure, then return the base and twist RIGHT to lock.

7. Reset the filter indicator by pressing and holding the Filter Reset button for 3 seconds. The red indicator light will turn off.

NOTE: When the filter expires, the system will send notification to remind the user to replace the filter. When the filter is not installed or the bottom cover is opened, the unit will shut off automatically.

UV-C BULB REPLACEMENT

Replace the bulb according to the directions below.

1. The UV-C bulb is located in a compartment in the center of the purifier. To access, first follow the instructions to remove the filter.
2. After removing the filter use a screwdriver to remove two screws and detach the UV bulb enclosure.
3. Hold the unit in place with one hand. Locate the bulb and reach into the cylinder.
4. Turn the bulb in a counter-clockwise direction (left) to loosen from the socket.
5. Take new bulb and screw into unit using a clockwise motion. Wipe off fingerprints with a dry cloth.
6. Reassemble by reversing steps 1&2. Turn the unit back on.



NOTE: DO NOT look directly at the UV light when UV-C is turned on.

CLEANING & MAINTAINING THE AIR PURIFIER

1. Unplug before cleaning.
2. Wipe the outside of the air purifier with a soft, dry cloth. If needed, wipe the housing with a damp cloth, then immediately dry.
3. Vacuum the inside of the air purifier.
4. Do not clean with abrasive chemicals or flammable cleaning agents.

CLEANING & MAINTAINING THE FILTER

The filter should be cleaned once a month to increase the efficiency and extend the life of your filter. Clean the inside and outside of the filter using a soft brush or vacuum hose to remove hair, dust, and large particles. Do not clean the filter with water or other liquids.

NOTE: The filter is not washable. DO NOT wet the filter when cleaning.

TROUBLESHOOTING

Problem	Solution
Unit is not powering on	Check to make sure PureZone Turbo is properly plugged in and the electrical outlet is working. Check that the base is latched firmly in place. Check that the filter is firmly in place.
Decreased air flow	Check that the filter is clean, replace if necessary. Check for any obstructions in the air inlet and outlet.
Excessive noise	Check for and remove any foreign objects in contact with the fan. The filter may be clogged and ready for replacement, replace if necessary. Uneven positioning. Reposition on an even surface.

If your problem is not resolved by the solutions listed above, contact Pure Enrichment for assistance by emailing help@pureenrichment.com.

PUREENRICHMENT APP TROUBLESHOOTING

My smart air purifier isn't connecting to the PureEnrichment app.

- Make sure your phone has Bluetooth® turned on and is not currently connected to another Bluetooth device. During the setup process, you must be on a secure network. Confirm that the network is working correctly.
- Make sure the Wi-Fi password you entered is correct.
- There should be no spaces at the beginning or end of the password.
- Test the password by connecting a different electronic device to the router.
- If you're manually typing in the SSID and password, double check that both are entered correctly.
- Try moving your air purifier closer to the router. Your phone should be as close as possible to your air purifier.
- Your router may need to be at a higher location, away from obstructions.
- Make sure your air purifier and router are away from appliances (such as microwave ovens, refrigerators, electronic devices, etc.) to avoid signal interference.
- If you're using a VPN, make sure it's turned off while setting up your air purifier.
- Disable portal authentication for your Wi-Fi network. If portal authentication is enabled, the air purifier will not be able to access your Wi-Fi network, and setup will fail.

NOTE: Portal authentication means that you need to sign in to your Wi-Fi network through a web page before you can use the Internet.

My air purifier is offline.

- Make sure the air purifier is plugged in and has power, then refresh the PureEnrichment menu by swiping down on the screen.
- Make sure your router is connected to the internet and your phone's network connection is working.
- Delete the offline air purifier from the PureEnrichment app and reconfigure the air purifier with the PureEnrichment app.

PUREENRICHMENT APP TROUBLESHOOTING

NOTE: Power outages, internet outages, or changing Wi-Fi routers may cause the air purifier to go offline.

If your problem is not resolved by the solutions listed above, contact Pure Enrichment for assistance by emailing help@pureenrichment.com.

WARRANTY

PureZone Turbo comes with an industry-leading 5 Year Warranty that begins on the date of purchase.

The warranty applies to the air purifier and necessary parts and labor relating thereto. The warranty does not apply to damage resulting from failure to follow the operating instructions, accidents, abuse, alterations, or disassembly by unauthorized individuals.

PRODUCT REGISTRATION

To ensure your full warranty, and to receive product updates and streamlined customer support, remember to register your product at:

pureenrichment.com/productregistration

ARE YOU 100% SATISFIED?

If you have product questions or concerns, don't hesitate to contact us directly at:

Email: help@pureenrichment.com

Phone: (657) 275-3737

(Available Monday-Friday, 8am-5pm PST)

Pure Enrichment has an award-winning warranty, exchange, and customer service program that guarantees hassle-free solutions to any issue you might have within 24 hours!



Santa Ana, CA 92704
pureenrichment.com

REV: 10.29.21